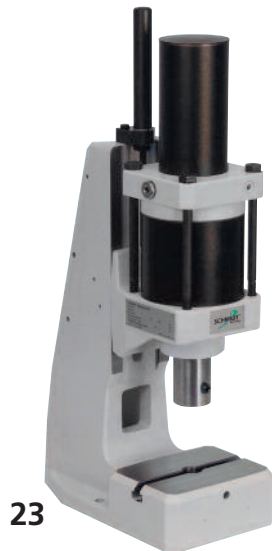


SCHMIDT® PneumaticPress

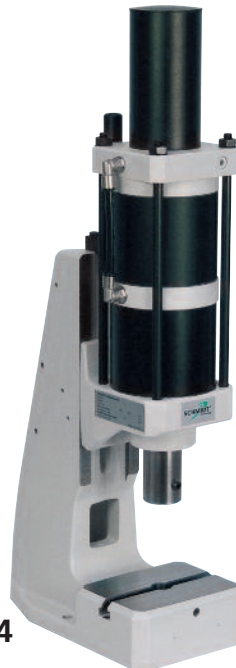
Direct Acting with constant force over the entire stroke



20



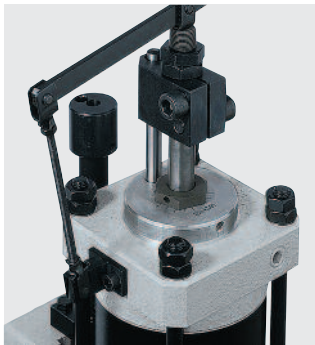
23



24



25



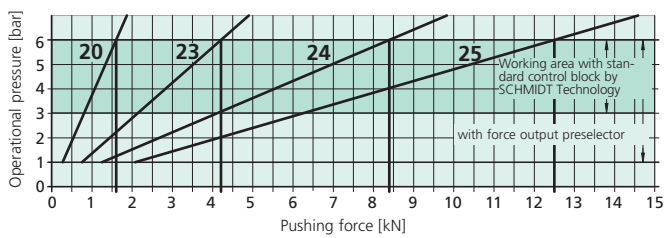
Precision lower stop
with fine adjustment



Pneumatic cylinder
with piston and
magnet kit for ram position
via cylinder switch

Features:

- Round anti-rotational ram
- Adjustable ram position in BDC by means of precision lower stop (1 division line = 0.05 mm) on scale
- T-slot with locking set screw in fixture mounting platen



From 1.6 kN to 12.5 kN

Press type			20	23	24	25
Working stroke	A	mm	50, 75, 100, 125, 160, 200, 250, 300	50, 75, 100, 125, 160, 200, 250, 300	50, 75, 100, 125, 160	50, 75, 100
Nominal force at 6 bar		kN	1.6	4.2	8.4	12.5
Throat depth	C	mm	86	86	86	86
Throat depth frame	○	mm	111, 131, 160, 200	111, 131, 160, 200	111, 131, 160, 200	111, 131
Additional fixture mounting platen suitable for throat depth frame		○	○	○	○	○
Ram bore (with bushing)		Ø mm	20H7	20H7	20H7	20H7
Ram diameter		Ø mm	40	40	40	40
Working height	F					
Frame No. 3		mm	80 – 220	90 – 210	90 – 210	90 – 210
Frame No. 2 ○		mm	110 – 360	120 – 350	120 – 350	120 – 350
Frame No. 2-600 ○		mm	200 – 600	210 – 580	210 – 580	210 – 580
Frame No. 2-1000 ○		mm	330 – 1040	335 – 1020	335 – 1020	335 – 1020
Weight (standard)		approx. kg	30	35	40	45
Flange model			20-FL	23-FL	24-FL	25-FL
Cylinder	Z	Ø mm	69	106	106	106
Flange	FL	Ø mm	110	140	140	140
Width across flats	SW	mm	80	112	112	112
Centering shoulder	ZA	Ø mm	60	68	68	68

Frame type	Press type	Frame height M mm	Table size W x D mm	Table Bore Ø mm	Table height K mm	Mounting surface W x L mm
No. 3	20, 23, 24, 25	540	150 x 110	20H7	60	150 x 260
No. 2	20, 23, 24, 25	700	185 x 110	20H7	60	185 x 280
No. 2-600 ○	20, 23, 24, 25	810	200 x 160	20H7	98	200 x 290
No. 2-1000 ○	20, 23, 24, 25	1250	200 x 160	20H7	98	200 x 290

Options

○ = Additional charge applies

Other Available Options

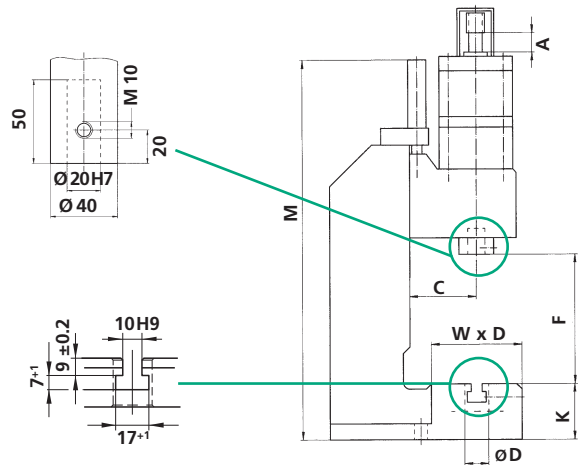
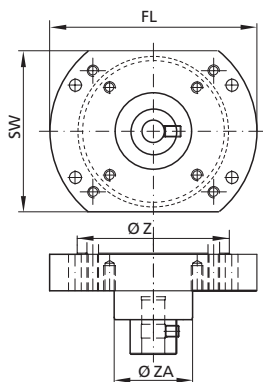
– **Nickel plated** – Cast parts are electroless nickel plated, steel components black oxide finished, aluminum anodized, precision steel surfaces are untreated

– **Custom Paint** – Press and column can be painted to customer's color specification
 – **Bores for Adapting Tooling** – Customer specific sizes can be supplied

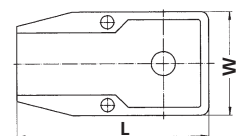
Please consult our Sales Department or Representative.

Bottom view of the press head, flange model

Mounting drill pattern flange / ram



Detailed dimensional drawings can be downloaded: www.schmidttechnology.de



SCHMIDT® PneumaticPress

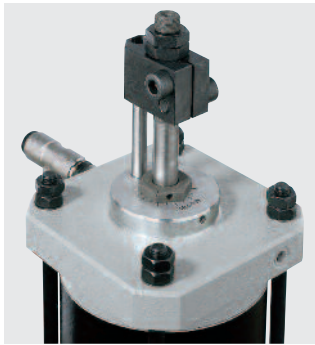
Direct Acting with constant force over the entire stroke



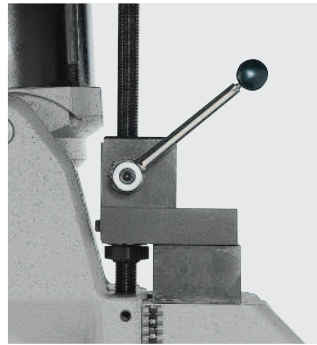
27



29



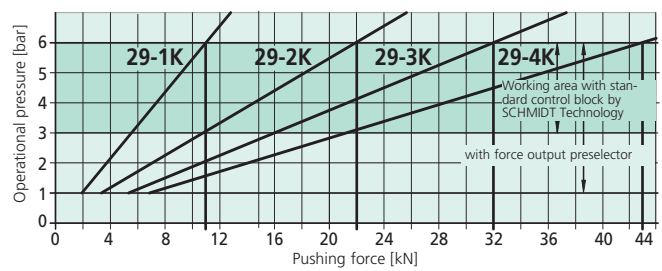
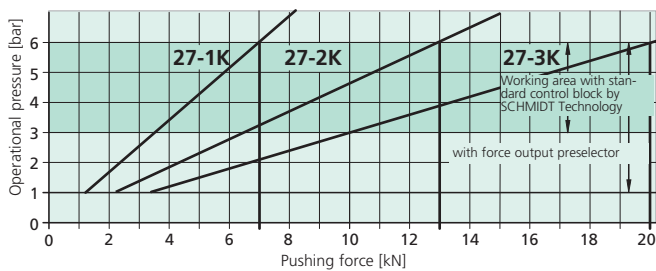
Precision lower stop
with fine adjustment



Height adjustment
Fast, accurate setting of the work height.

Features:

- Round anti-rotational ram
- Adjustable ram position in BDC by means of precision lower stop (1 division line = 0.05 mm) on scale



From 7 kN to 43 kN

Press type			27-1K	27 -2K	27-3K	29-1K	29 -2K	29-3K	29-4K
Working stroke	A	mm	50, 75, 100, 160, 200, 250, 300	50, 75, 100, 125, 160, 200	50, 75, 100, 125, 160	50, 75, 100, 160, 200, 300	50, 75, 100, 125, 160, 200	50, 75, 100, 125, 160	50, 75, 100
Nominal force at 6 bar		kN	7	13	20	11	22	32	43
Throat depth	C	mm	131	131	131	140	140	140	140
Throat depth frame \bigcirc		mm	151	151	151	160, 180	160, 180	160, 180	160
Fixture mounting platen suitable for throat depth frame			\bigcirc	\bigcirc	\bigcirc	\bigcirc	\bigcirc	\bigcirc	\bigcirc
Ram bore (with bushing)		\varnothing mm	20H7	20H7	20H7	20H7	20H7	20H7	20H7
Ram diameter		\varnothing mm	40	40	40	50	50	50	50
Working height	F								
Frame No. 34		mm	90 – 270	90 – 270	90 – 270				
Frame No. 301 \bigcirc		mm	160 – 400	160 – 400	160 – 400				
Frame No. 301-500 \bigcirc		mm	310 – 550	310 – 550	310 – 550				
Frame No. 29		mm				110 – 290	110 – 290	110 – 290	110 – 290
Frame No. 29-500 \bigcirc		mm				150 – 500	150 – 500	150 – 500	150 – 500
Frame No. 29-600 \bigcirc		mm				250 – 600	250 – 600	250 – 600	250 – 600
Weight (standard)		approx. kg	85	85	85	120	120	120	120
Flange model			27-1K-FL	27-2K-FL	27-3K-FL	29-1K-FL	29-2K-FL	29-3K-FL	29-4K-FL
Cylinder	Z	\varnothing mm	132	132	132	170	170	170	170
Flange	FL	\varnothing mm	180	180	180	220	220	220	220
Width across flats	SW	mm	140	140	140	180	180	180	180
Centering shoulder	ZA	\varnothing mm	68	68	68	80	80	80	80

Frame overview							
Frame type	Press type	Frame height	Table size	Table bore	Table height	Mounting surface	
		M	W x D	mm	K	W x L	
		mm	mm	mm	mm	mm	
No. 34	27	630	200 x 160	25H7	111	200 x 370	
No. 301	27	830	250 x 200	40H7	145	250 x 460	
No. 301-500	27	990	250 x 200	40H7	145	250 x 480	
Special fixture mounting platen with 3 longitudinal slots \bigcirc			300 x 220	40H7			
			400 x 230	40H7			
No. 29	29	690	300 x 220	40H7	141	300 x 460	
No. 29-500	29	990	300 x 220	40H7	166	300 x 540	
No. 29-600	29	1110	300 x 220	40H7	166	300 x 565	
Special fixture mounting platen with 3 longitudinal slots \bigcirc			355 x 225	40H7			
			400 x 230	40H7			

Options

\bigcirc = Additional charge applies

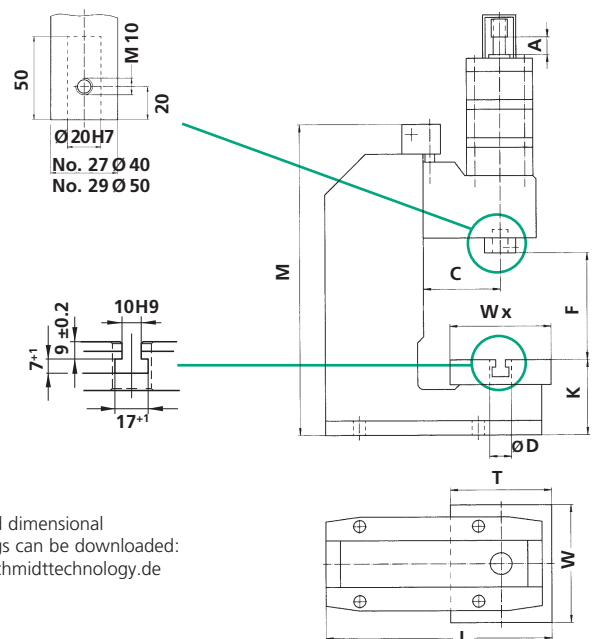
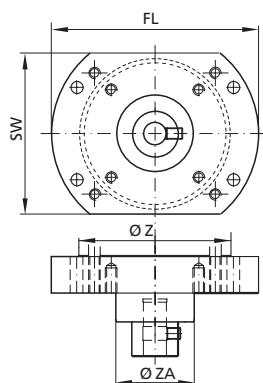
Other Available Options

- **Nickel plated** – Cast parts are electroless nickel plated, steel components black oxide finished, aluminum anodized, precision steel surfaces are untreated
- **Custom Paint** – Press and column can be painted to customer's color specification
- **Bores for Adapting Tooling** – Customer specific sizes can be supplied

Please consult our Sales Department or Representative.

Bottom view of the press head, flange model

Mounting drill pattern flange / ram



Detailed dimensional drawings can be downloaded: www.schmidttechnology.de