

# SCHMIDT® PneumaticPress

Pneumatic toggle presses with maximum force at the end of stroke



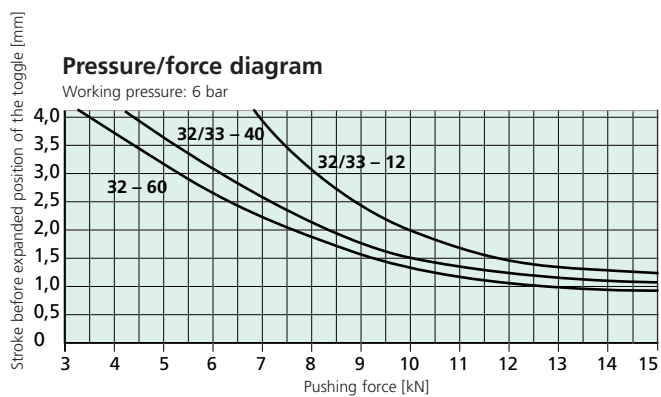
**Fine adjustment**  
for press No. 33 with scale  
1 division line = 0.02 mm



**Flexible stroke adjustment**  
reduces the air consumption  
for shorter strokes.

**Features:**

- T-slot with set screw in fixture mounting platen to secure bottom tool.



<b>Press type</b>			<b>32</b>	<b>33</b>
Working stroke	<b>A</b>	mm	<b>0-12</b> <b>4-40</b> <b>6-60</b>	<b>0-12</b> <b>4-40</b>
Nominal force at 6 bar		kN	15	15
Throat depth	<b>C</b>	mm	86	86
Throat depth frame	○	mm	111, 131	111, 131
Additional fixture mounting platen suitable for throat depth frame			○	○
Ram bore (with bushing)		∅ mm	20H7	20H7
External ram dimensions		mm	∅ 40	∅ 40
Fine adjustment				●
<b>Working height</b>	<b>F</b>			
Frame No. <b>3</b>		mm	90 – 210	
Frame No. <b>2</b>		mm	120 – 340	80 – 290
Frame No. <b>2-600</b>	○	mm	210 – 580	160 – 530
Frame No. <b>2-1000</b>	○	mm	340 – 1020	290 – 970
Weight (standard)		approx. kg	45	50

Frame overview						
Frame type	Press type	Frame height M	Table size W x D	Table bore ∅ mm	Table height K	Mounting surface W x L
No. <b>3</b>	<b>32</b>	mm	150 x 110	20H7	60	150 x 260
No. <b>2</b>	<b>32, 33</b>	mm	185 x 110	20H7	60	185 x 280
No. <b>2-600</b>	<b>32, 33</b>	mm	200 x 160	20H7	98	200 x 290
No. <b>2-1000</b>	<b>32, 33</b>	mm	200 x 160	20H7	98	200 x 290

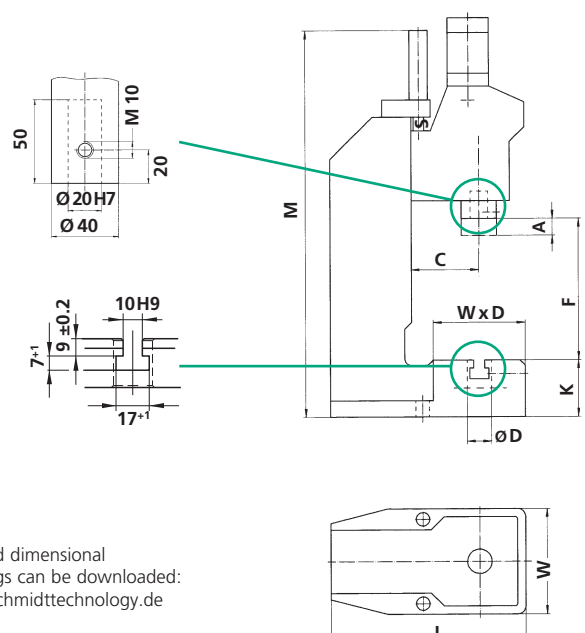
### Options

- = Series standard with no additional charge
- = Additional charge applies

### Other Available Options

- **Nickel plated** – Cast parts are electroless nickel plated, steel components black oxide finished, aluminum anodized, precision steel surfaces are untreated
- **Custom Paint** – Press and column can be painted to customer's color specification
- **Bores for Adapting Tooling** – Customer specific sizes can be supplied

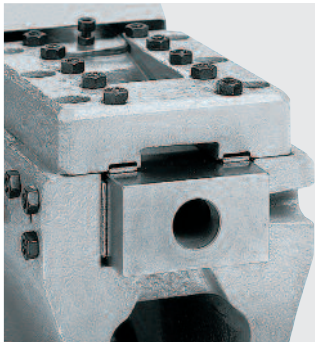
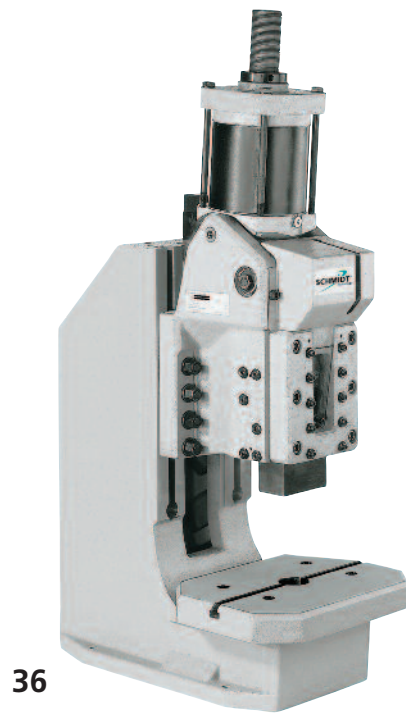
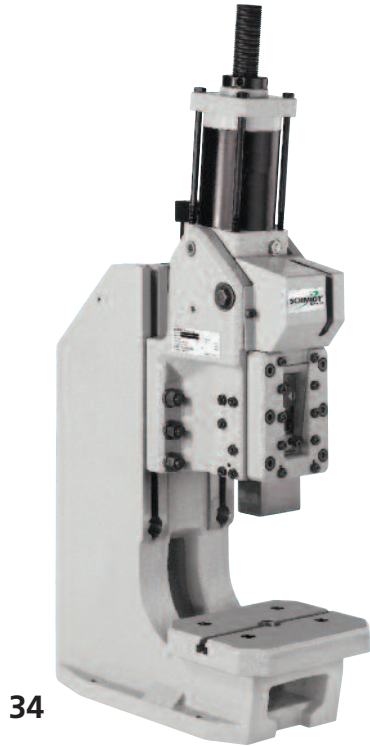
Please consult our Sales Department or Representative.



Detailed dimensional drawings can be downloaded: [www.schmidttechnology.de](http://www.schmidttechnology.de)

# SCHMIDT® PneumaticPress

Pneumatic toggle presses with maximum force at the end of stroke



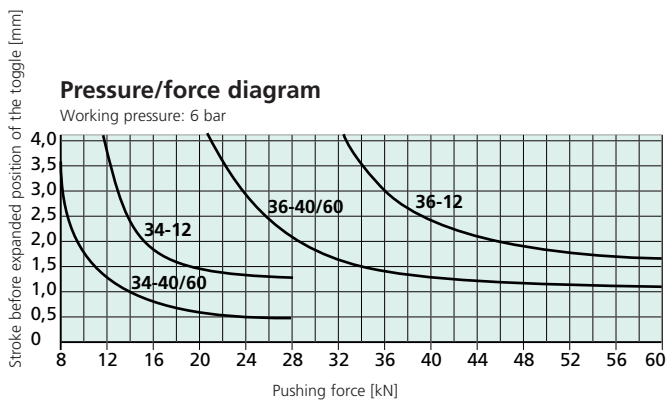
Square ram



Fine adjustment

**Features:**

- Anti-rotational square ram with fully adjustable, Teflon lined gibs for precise travel, no die set required
- Exact positioning due to fine adjustment scale (1 division line = 0.05 mm)



# From 28 kN to 60 kN

Press type			34	36
Working stroke	A	mm	0-12 4-40 6-60	0-12 4-40 6-60
Nominal force at 6 bar		kN	28	60
Throat depth	C	mm	131	160
Throat depth frame $\bigcirc$		mm	151, 170	185
Fixture mounting platen suitable for throat depth frame			$\bigcirc$	$\bigcirc$
Ram bore (with bushing)		$\varnothing$ mm	20H7	20H7
External ram dimensions	G x H	mm	36 x 63	46 x 86
Working height				
Frame No. 34	F	mm	100 – 250	
Frame No. 301		mm	160 – 400	
Frame No. 301-500		mm	310 – 550	
Frame No. 35		mm		100 – 250
Frame No. 35-500		mm		150 – 500
Frame No. 35-600		mm		250 – 600
Weight (standard)		approx. kg	90	150

Frame overview						
Frame type	Press type	Frame height M	Table size W x D	Table bore	Table height K	Mounting surface W x L
		mm	mm	$\varnothing$ mm	mm	mm
No. 34	34	630	200 x 160	25H7	111	200 x 370
No. 301	34	830	250 x 200	40H7	145	250 x 460
No. 301-500	34	990	250 x 200	40H7	145	250 x 480
Special fixture mounting platen with 3 longitudinal slots $\bigcirc$			300 x 220	40H7		
			400 x 230	40H7		
No. 35	36	700	300 x 220	40H7	141	300 x 480
No. 35-500	36	990	300 x 220	40H7	166	300 x 560
No. 35-600	36	1110	300 x 220	40H7	166	300 x 585
Special fixture mounting platen with 3 longitudinal slots $\bigcirc$			355 x 225	40H7		
			400 x 280	40H7		

### Options

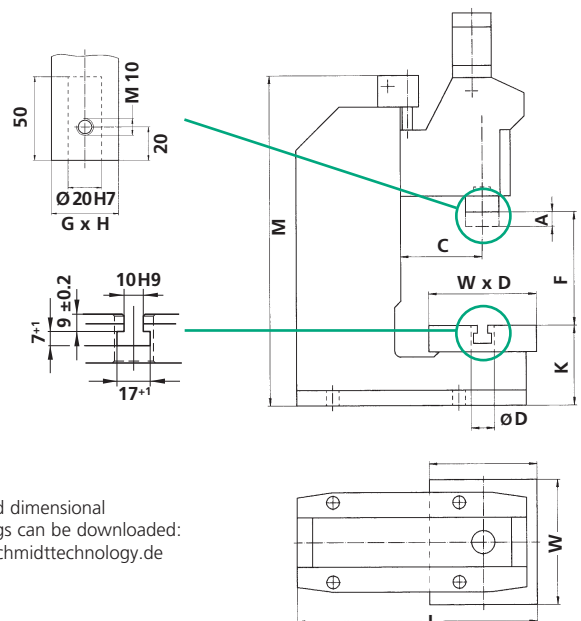
$\bigcirc$  = Additional charge applies

### Other Available Options

– **Nickel plated** – Cast parts are electroless nickel plated, steel components black oxide finished, aluminum anodized, precision steel surfaces are untreated

- **Custom Paint** – Press and column can be painted to customer's color specification
- **Bores for Adapting Tooling** – Customer specific sizes can be supplied

Please consult our Sales Department or Representative.



Detailed dimensional drawings can be downloaded: [www.schmidttechnology.de](http://www.schmidttechnology.de)