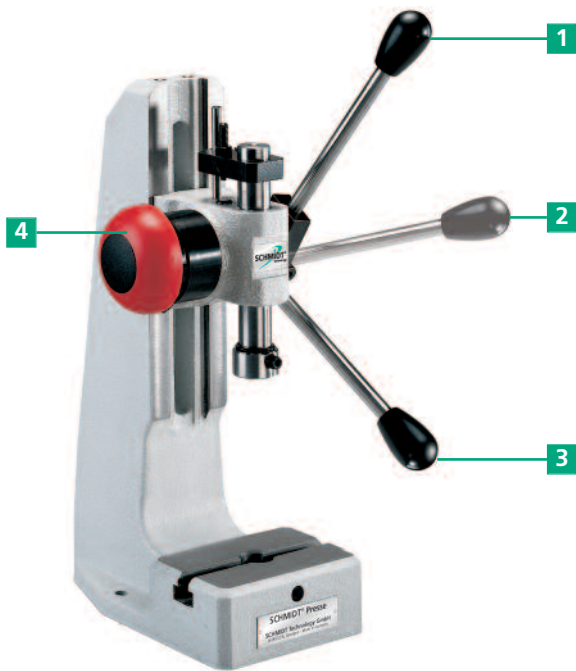


SCHMIDT® ManualPress

Optional accessories



The return stroke lock guarantees reaching the required pressing depth with every stroke.

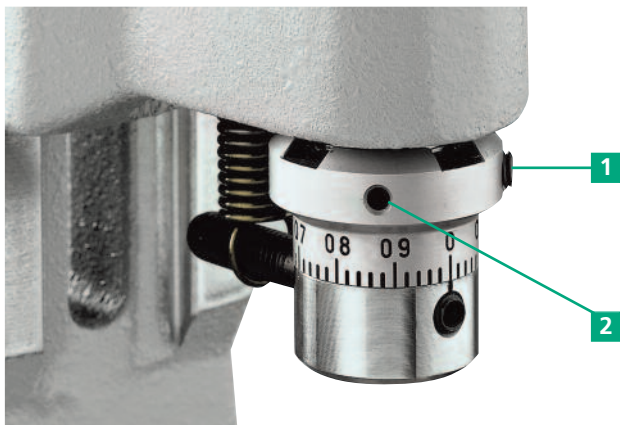
- 1) TDC (Top Dead Center) position
- 2) First lock-in position: Loose tools can still be aligned.
- 3) After reaching BDC (Bottom Dead Center) by completing the stroke the return stroke lock is released. This guarantees a repeatable BDC and thus a constant press depth.
- 4) The emergency button releases the locking function in any position.



The micrometer screw serves as stop for the rack-and-pinion presses.

A micrometer adjustable stop specially developed for presses for the fine adjustment of the BDC.

The robust and precise design ensures the repeatability of the stop, no matter how many strokes are taken.



Fine adjustment with micrometer scale for toggle presses

By loosening the tensioning screw **1** and turning the adjusting nut **2** with the same tool, the setting of the BDC can be adjusted infinitely. Graduation is in the 0.02 mm line to line range and is reached rapidly and precisely.

Options suitable for your application



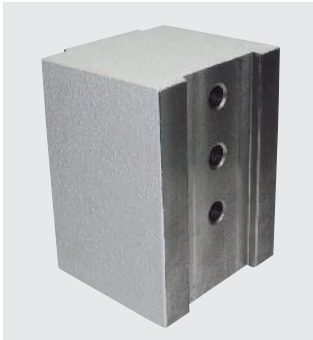
Mechanical counter

A four digit counter monitors the number of pieces produced. The counter is provided with a reset function.



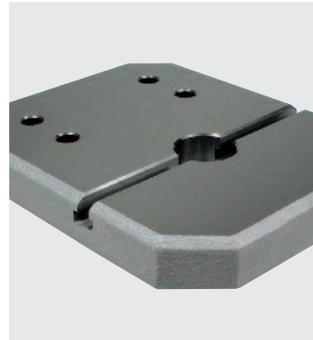
Collet

For the rack-and-pinion presses No. 1 and No. 2, collet bore diameter of 1 to 17 mm.



Throat extension block

We offer various sizes for extended throat depths.



Special fixture mounting plates

Special fixture mounting plates, designed in conjunction with throat extension blocks, provide ram to table bore alignment when spacer is used.



Ergonomic left-handed design

With most press types, left-handed or left-/right-handed design is an available option.



Upper Tooling Adapter

Adapter for tools with a diameter of 5 – 20 mm.



Nickel plated design

Press frames and cast parts are electroless nickel-plated, steel components are black oxide finished, aluminum parts are anodized, precision steel surfaces are untreated.



Ergonomic handle

Swivelling handle for discharge of the wrist; easy and flexible assembly on the hand lever.

Order Key for press options

- R** = incl. return stroke lock with emergency release
- F** = incl. fine adjustment (for toggle presses)
- Z** = incl. mechanical counter
- M** = micrometer screw (for rack-and-pinion presses)
- RF** = incl. return stroke lock with emergency release and fine adjustment

Order example

- No. 3 R**
= **SCHMIDT® Rack-and-Pinion Press No. 3** incl. return stroke lock with emergency release
- or
- No. 13 RFZ**
= **SCHMIDT® Toggle Press No. 13** incl. return stroke lock with emergency release, fine adjustment and mechanical counter