

# SCHMIDT® PneumaticPress

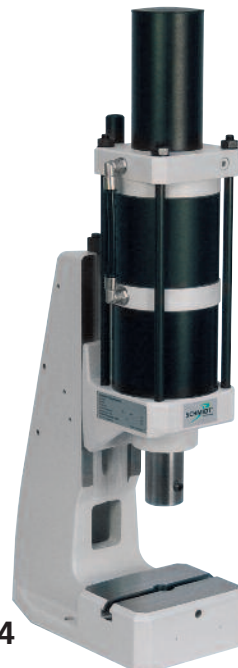
Direct Acting with constant force over the entire stroke



20



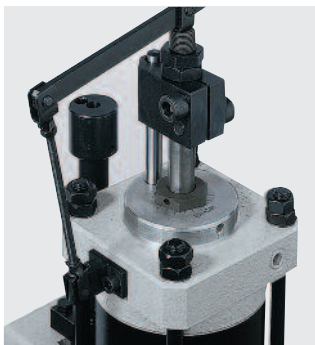
23



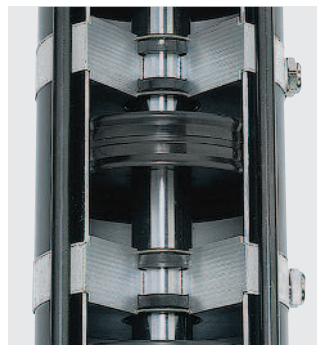
24



25



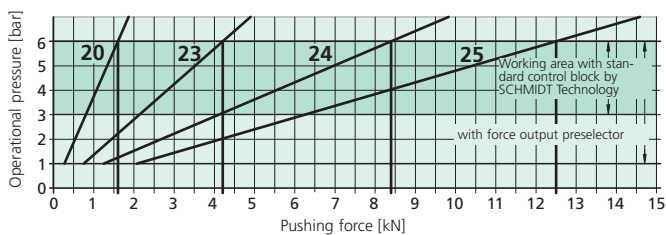
**Precision lower stop**  
with fine adjustment



**Pneumatic cylinder**  
with piston and  
magnet kit for position  
via cylinder switch

**Features:**

- Round anti-rotational ram
- Adjustable ram position in BDC by means of precision lower stop (1 division line = 0.05 mm) on scale
- T-slot with locking set screw in fixture mounting platen



# From 1.6 kN to 12.5 kN

Press type			20	23	24	25
Working stroke	A	mm	50, 75, 100, 125, 160, 200, 250, 300	50, 75, 100, 125, 160, 200, 250, 300	50, 75, 100, 125, 160	50, 75, 100
Nominal force at 6 bar		kN	1.6	4.2	8.4	12.5
Throat depth	C	mm	86	86	86	86
Throat depth frame	○	mm	111, 131, 160, 200	111, 131, 160, 200	111, 131, 160, 200	111, 131
Additional fixture mounting platen suitable for throat depth frame						
		○	○	○	○	○
Ram bore (with bushing)		Ø mm	20H7	20H7	20H7	20H7
Ram diameter		Ø mm	40	40	40	40
Working height			F			
Frame No. 3		mm	80 – 220	90 – 210	90 – 210	90 – 210
Frame No. 2 ○		mm	110 – 360	120 – 350	120 – 350	120 – 350
Frame No. 2-600 ○		mm	200 – 600	210 – 580	210 – 580	210 – 580
Frame No. 2-1000 ○		mm	330 – 1040	335 – 1020	335 – 1020	335 – 1020
Weight (standard)		approx. kg	30	35	40	45
Flange model			20-FL	23-FL	24-FL	25-FL
Cylinder	Z	Ø mm	69	106	106	106
Flange	FL	Ø mm	110	140	140	140
Width across flats	SW	mm	80	112	112	112
Centering shoulder	ZA	Ø mm	60	68	68	68

Frame type	Press type	Frame height M mm	Table size W x D mm	Table Bore Ø mm	Table height K mm	Mounting surface W x L mm
No. 3	20, 23, 24, 25	540	150 x 110	20H7	60	150 x 260
No. 2	20, 23, 24, 25	700	185 x 110	20H7	60	185 x 280
No. 2-600 ○	20, 23, 24, 25	810	200 x 160	20H7	98	200 x 290
No. 2-1000 ○	20, 23, 24, 25	1250	200 x 160	20H7	98	200 x 290

### Options

○ = Additional charge applies

### Other Available Options

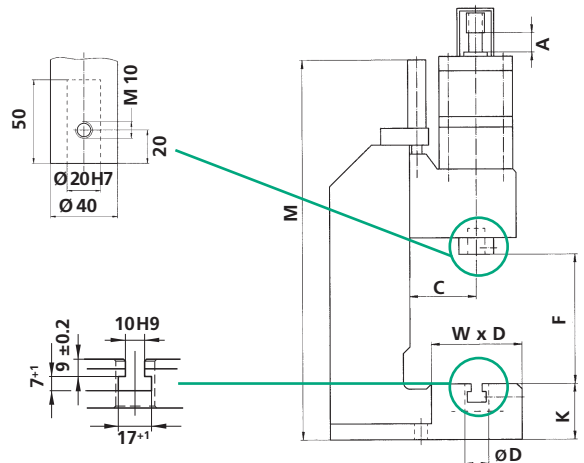
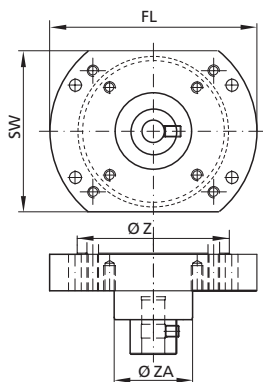
– **Nickel plated** – Cast parts are electroless nickel plated, steel components black oxide finished, aluminum anodized, precision steel surfaces are untreated

- **Custom Paint** – Press and column can be painted to customer's color specification
- **Bores for Adapting Tooling** – Customer specific sizes can be supplied

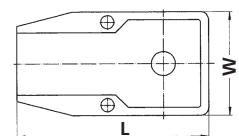
Please consult our Sales Department or Representative.

### Bottom view of the press head, flange model

Mounting drill pattern flange / ram



Detailed dimensional drawings can be downloaded: [www.schmidttechnology.de](http://www.schmidttechnology.de)



# SCHMIDT® PneumaticPress

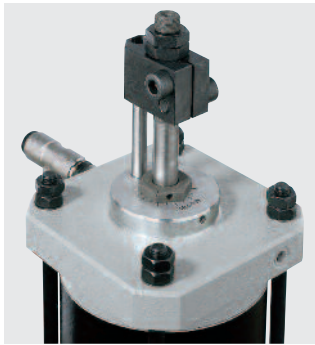
Direct Acting with constant force over the entire stroke



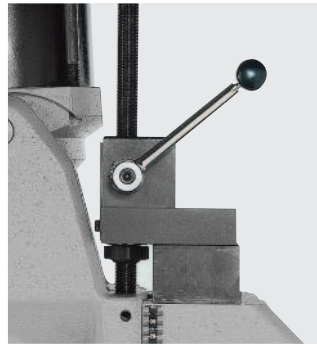
27



29



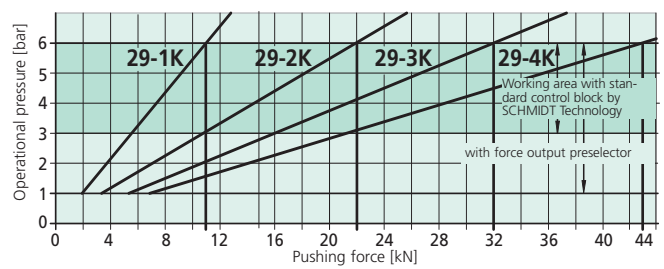
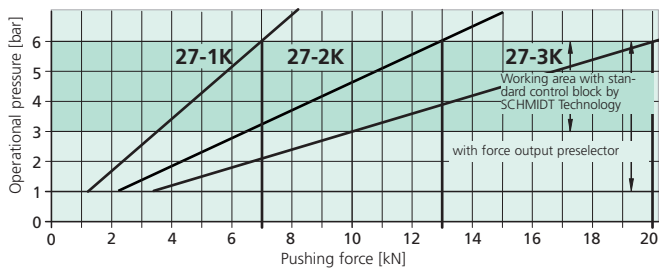
**Precision lower stop**  
with fine adjustment



**Height adjustment**  
Fast, accurate setting of the work height.

**Features:**

- Round anti-rotational ram
- Adjustable ram position in BDC by means of precision lower stop (1 division line = 0.05 mm) on scale



# From 7 kN to 43 kN

Press type			27-1K	27 -2K	27-3K	29-1K	29 -2K	29-3K	29-4K
Working stroke	<b>A</b>	mm	50, 75, 100, 160, 200, 250, 300	50, 75, 100, 125, 160, 200	<b>50, 75, 100, 125, 160</b>	50, 75, 100, 160, 200, 300	50, 75, 100, 125, 160, 200	<b>50, 75, 100, 125, 160</b>	50, 75, 100
Nominal force at 6 bar		kN	7	13	20	11	22	32	43
Throat depth	<b>C</b>	mm	131	131	131	140	140	140	140
Throat depth frame $\bigcirc$		mm	151	151	151	160, 180	160, 180	160, 180	160
Fixture mounting platen suitable for throat depth frame			$\bigcirc$	$\bigcirc$	$\bigcirc$	$\bigcirc$	$\bigcirc$	$\bigcirc$	$\bigcirc$
Ram bore (with bushing)		$\emptyset$ mm	20H7	20H7	20H7	20H7	20H7	20H7	20H7
Ram diameter		$\emptyset$ mm	40	40	40	50	50	50	50
<b>Working height</b>	<b>F</b>								
Frame No. <b>34</b>		mm	90 – 270	90 – 270	90 – 270				
Frame No. <b>301</b> $\bigcirc$		mm	160 – 400	160 – 400	160 – 400				
Frame No. <b>301-500</b> $\bigcirc$		mm	310 – 550	310 – 550	310 – 550				
Frame No. <b>29</b>		mm				110 – 290	110 – 290	110 – 290	110 – 290
Frame No. <b>29-500</b> $\bigcirc$		mm				150 – 500	150 – 500	150 – 500	150 – 500
Frame No. <b>29-600</b> $\bigcirc$		mm				250 – 600	250 – 600	250 – 600	250 – 600
Weight (standard)		approx. kg	85	85	85	120	120	120	120
<b>Flange model</b>			27-1K-FL	27-2K-FL	<b>27-3K-FL</b>	29-1K-FL	29-2K-FL	<b>29-3K-FL</b>	29-4K-FL
Cylinder	<b>Z</b>	$\emptyset$ mm	132	132	132	170	170	170	170
Flange	<b>FL</b>	$\emptyset$ mm	180	180	180	220	220	220	220
Width across flats	<b>SW</b>	mm	140	140	140	180	180	180	180
Centering shoulder	<b>ZA</b>	$\emptyset$ mm	68	68	68	80	80	80	80

Frame overview						
Frame type	Press type	Frame height	Table size	Table bore	Table height	Mounting surface
		<b>M</b>	<b>W x D</b>	<b>mm</b>	<b>K</b>	<b>W x L</b>
		mm	mm	mm	mm	mm
No. <b>34</b>	27	630	200 x 160	25H7	111	200 x 370
No. <b>301</b>	27	830	250 x 200	40H7	145	250 x 460
No. <b>301-500</b>	27	990	250 x 200	40H7	145	250 x 480
Special fixture mounting platen with 3 longitudinal slots $\bigcirc$			300 x 220	40H7		
			400 x 230	40H7		
No. <b>29</b>	29	690	300 x 220	40H7	141	300 x 460
No. <b>29-500</b>	29	990	300 x 220	40H7	166	300 x 540
No. <b>29-600</b>	29	1110	300 x 220	40H7	166	300 x 565
Special fixture mounting platen with 3 longitudinal slots $\bigcirc$			355 x 225	40H7		
			400 x 230	40H7		

### Options

$\bigcirc$  = Additional charge applies

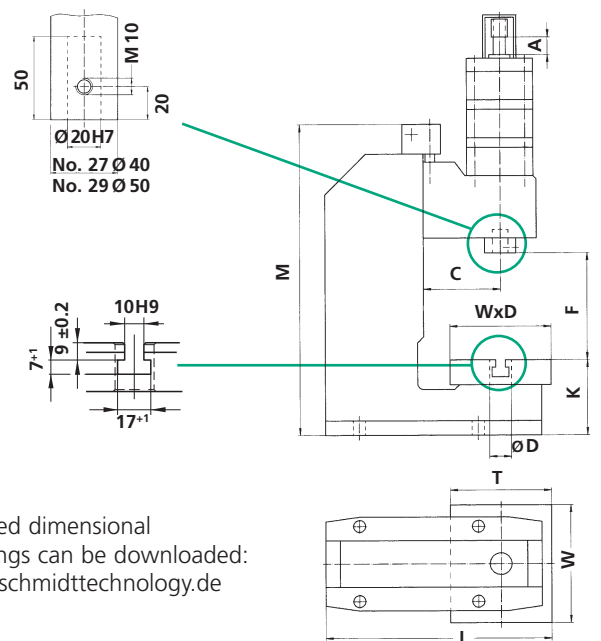
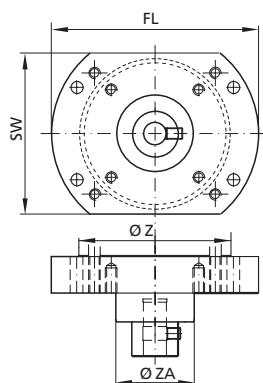
### Other Available Options

- **Nickel plated** – Cast parts are electroless nickel plated, steel components black oxide finished, aluminum anodized, precision steel surfaces are untreated
- **Custom Paint** – Press and column can be painted to customer's color specification
- **Bores for Adapting Tooling** – Customer specific sizes can be supplied

Please consult our Sales Department or Representative.

### Bottom view of the press head, flange model

Mounting drill pattern flange / ram



Detailed dimensional drawings can be downloaded: [www.schmidttechnology.de](http://www.schmidttechnology.de)