

SCHMIDT® PneumaticPress

Control versions with force/stroke monitoring

Press-specific installation material

Optional

- Ram drift lock to secure ram in home position when air supply has been removed.
- Force output preselector approx. 1...6 bar



Single-channel control

(Integration of the press in an automatic installation)

Single-channel pneumatic control block
Incl. flow control for adjusting the speed in working stroke

8 inputs / 4 outputs:
Terminal box for wiring the valve and the press sensors

External control

Interface to external control
a) CAN bus coupler with input/output boards
b) CAN profibus gateway

CAN bus

21 pole connection

ControlTool SPC

USB

Signals of the force/stroke sensors

Two-channel control

(With manual loading of the machine)

Additional valves: Option 1
1/8" – 5/2 additional valves mounted to the pneumatic control block

Additional valves: Option 2
CAN bus valve terminal

- 2-hand-release
- Light curtain

External control

CAN bus coupler
With input and output termination strip if more than 8 I / 4 O are required
CAN profibus gateway
As interface to the external control

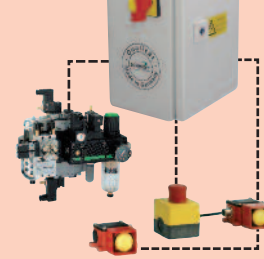
8 inputs / 4 outputs
Wiring options:
- Terminal box
- 8 fold sensor box

21-pole connection

Signals of the force/stroke sensors

EC-type approved

Safety Module



SCHMIDT® SafetyModule
Safety circuit with terminals to connect the 2-channel pneumatic block and the release elements. The release of the press, 2-hand-release or automatic mode (light curtain or pneumatic guard door), must be configured and parameterized accordingly. The communication with the control is via CAN-Bus.

2-channel pneumatic block inclusive 2 flow controls for the speed adjustment in the working and return stroke.

Electrical power stroke connection incl. force output preselector

CAN bus

ControlTool SPC

USB