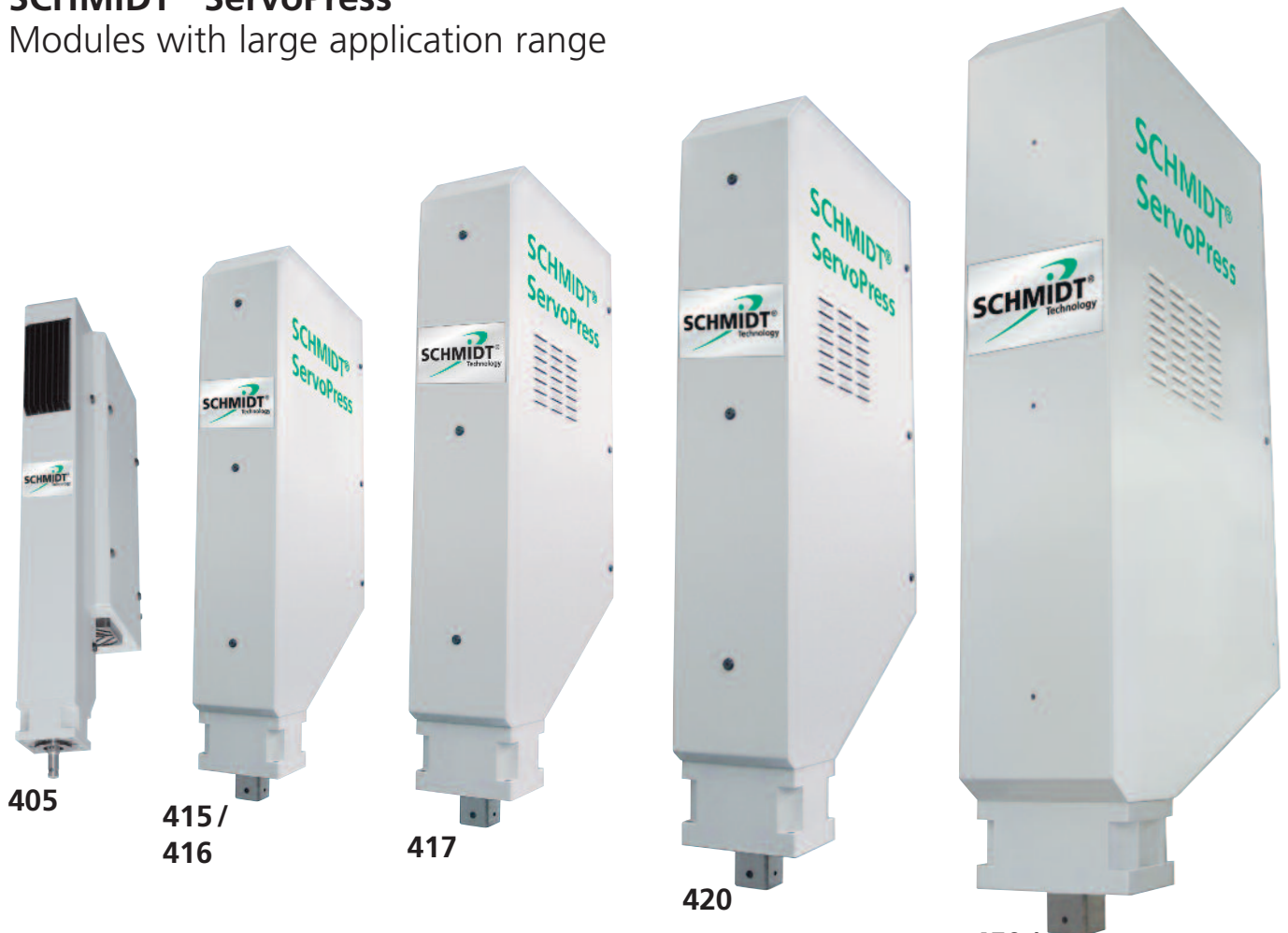


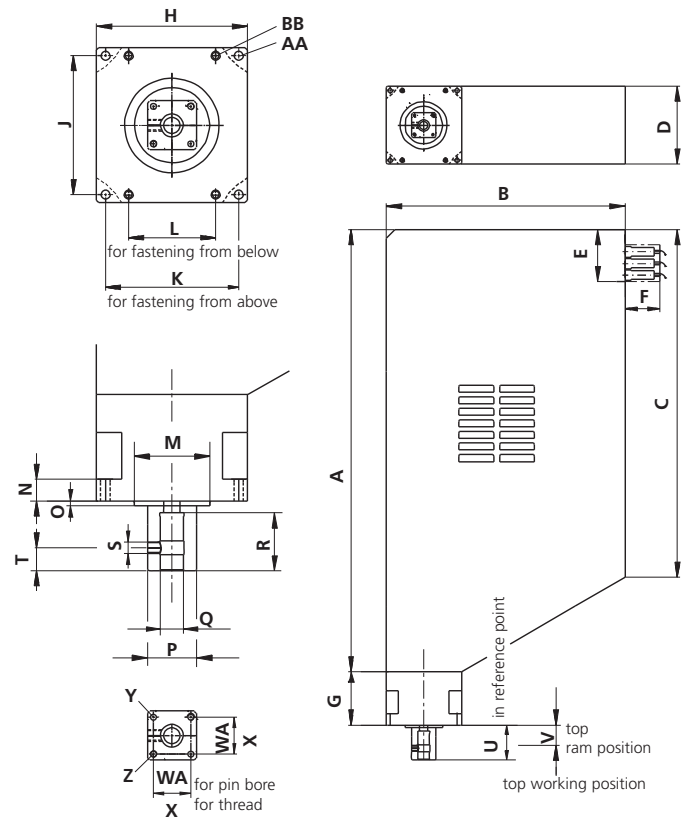
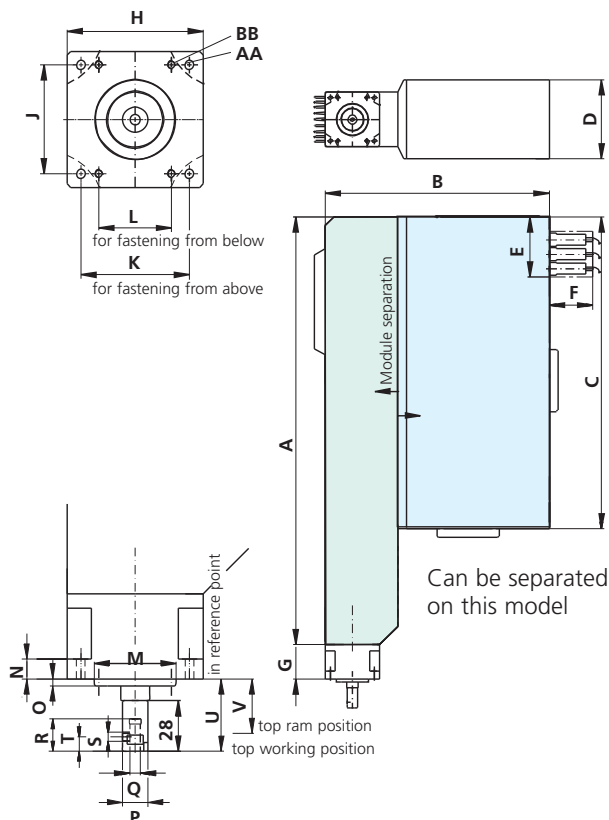
SCHMIDT® ServoPress

Modules with large application range



ServoPress 405

ServoPress 415 to 460



Modules

With force outputs of 15 N to 150 kN

Technical data

ServoPress type		405	415	416	417	420	450	460
Force F	max kN	0.8	4.5	5	14	35	75	150
Force F at 100 % duty cycle	kN	0.5	1.5	3	7.5	20	50	100
Ram stroke	mm	150	200	200	300	400	500	500
Resolution (drive control)	µm	< 0.1	< 0.1	< 0.1	< 0.1	< 0.1	< 0.1	< 0.1
Resolution, process data acquisition								
- stroke	µm/inc	2.4	4	4	5	6	8	8
- force	N/inc	0.25	1	1	4	10	24	48
Ram speed	mm/s	0 to 300	0 to 200	0 to 200	0 to 200	0 to 200	0 to 200	0 to 100
Overload protection		-	Mech. clutch	Mech. clutch	Mech. clutch	Mech. clutch	Mech. clutch	Mech. clutch
Service life of the cycles acc. to standard operating profile		2×10^7	2×10^7	2×10^7	2×10^7	2×10^7	2×10^7	1×10^7
Drive		Threaded drive	Threaded drive	Threaded drive	Threaded drive	Threaded drive	Threaded drive	Threaded drive
Power supply		230 V 1~/6.3 A (3x208 V 3~/6.3 A)	230 V 1~/16 A (3x208 V 3~/16 A)	230 V 1~/16 A (3x208 V 3~/16 A)	230 V 3~/16 A	400 V 3~/16 A	400 V 3~/35 A	400 V 3~/35 A
Weight	approx. kg	20	27	27	70	120	240	240

Module dimensions

ServoPress type			405	415 / 416	417	420	450 / 460
Housing							
	A	mm	590	560	762	978	1166
	B	mm	309	330	412	535	677
	C	mm	440	434	600	763	992
	D	mm	109	109	134	180	236
Cable connection							
	E	mm	~ 75	~ 75	~ 90	~ 100	~ 90
	F	mm	~ 60	~ 60	~ 60	~ 60	~ 60
Flange							
	G	mm	47	77	92	122	120
	H	mm	75	75	130	140	150
	J	mm ±0.1	60	88	120	160	210
	K	mm ±0.1	60	63	115	120	130
	L	mm ±0.1	40	59.4 x 59.4	75		
	M	∅ mm	45h7	45h7	65h7	90h7	100h7
	N	mm	11	11	19	32	33
	O	mm	4	4	4	5	5
	AA	∅ mm	5.3	6.3	8.4	10.1/M12	12.0/M14
	BB	∅ mm	M5	M6	M8		
Ram							
External ram dimensions	P	mm	∅ 14	32 x 32	42 x 42	55 x 55	65 x 65
Ram bore (with bushing)	Q	∅ mm	6H7	10H7	20H7	20H7	20H7
	R	mm	18	30	50	40	50
	S		M5	M8	M10	M10	M10
	T	mm	8	10	20	20	20
Top working position	U	mm	40	50	60	60	60
Top ram position	V	mm	30	37.5	35	50	45
For pin bore	W	mm ±0.02		22	32	40	40
for thread	X	mm		22	32	40	40
	Y			M5	M6	M8	M8
	Z	∅ mm		5H7	5H7	8H7	8H7

Standard operating profile

