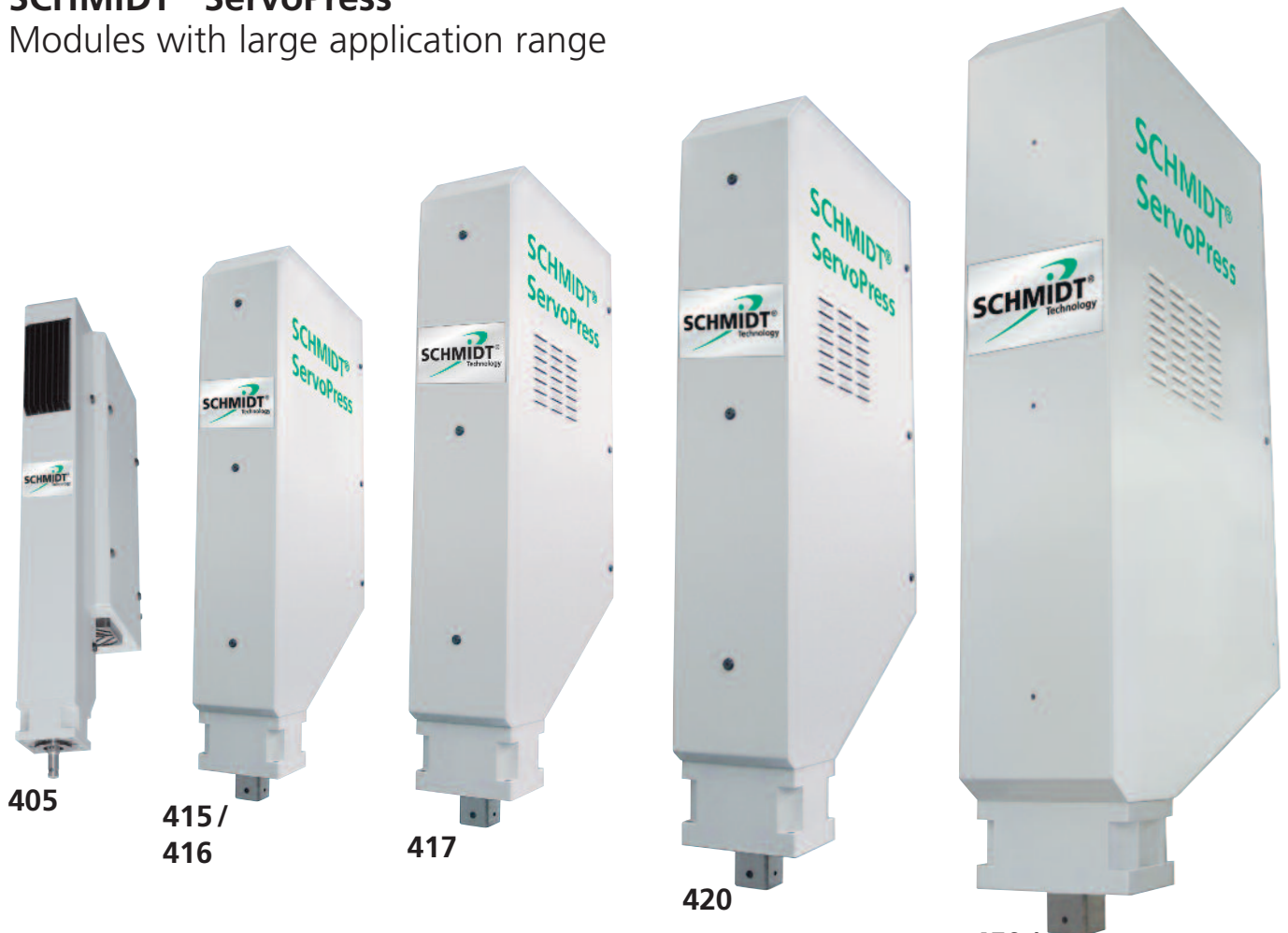


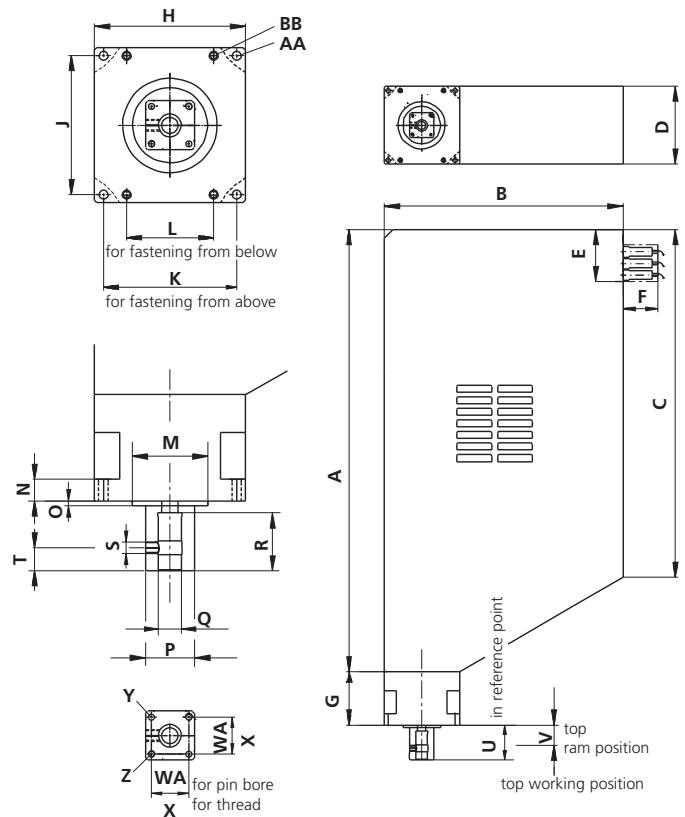
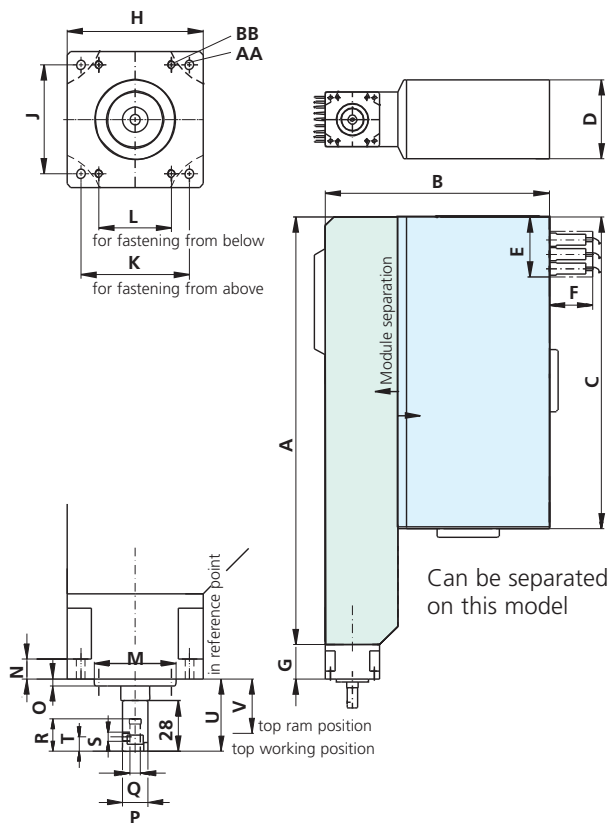
SCHMIDT® ServoPress

Modules with large application range



ServoPress 405

ServoPress 415 to 460



Modules

With force outputs of 15 N to 150 kN

Technical data

| ServoPress type | | 405 | 415 | 416 | 417 | 420 | 450 | 460 |
|---|------------|---------------------------------------|-------------------------------------|-------------------------------------|-----------------|-----------------|-----------------|-----------------|
| Force F | max kN | 0.8 | 4.5 | 5 | 14 | 35 | 75 | 150 |
| Force F at 100 % duty cycle | kN | 0.5 | 1.5 | 3 | 7.5 | 20 | 50 | 100 |
| Ram stroke | mm | 150 | 200 | 200 | 300 | 400 | 500 | 500 |
| Resolution (drive control) | µm | < 0.1 | < 0.1 | < 0.1 | < 0.1 | < 0.1 | < 0.1 | < 0.1 |
| Resolution, process data acquisition | | | | | | | | |
| - stroke | µm/inc | 2.4 | 4 | 4 | 5 | 6 | 8 | 8 |
| - force | N/inc | 0.25 | 1 | 1 | 4 | 10 | 24 | 48 |
| Ram speed | mm/s | 0 to 300 | 0 to 200 | 0 to 200 | 0 to 200 | 0 to 200 | 0 to 200 | 0 to 100 |
| Overload protection | | - | Mech. clutch | Mech. clutch | Mech. clutch | Mech. clutch | Mech. clutch | Mech. clutch |
| Service life of the cycles acc. to standard operating profile | | 2×10^7 | 2×10^7 | 2×10^7 | 2×10^7 | 2×10^7 | 2×10^7 | 1×10^7 |
| Drive | | ball screw | ball screw | ball screw | ball screw | roller screw | roller screw | roller screw |
| Power supply | | 230 V 1~/ 6.3 A (3x208 V 3~/6.3 A) | 230 V 1~/ 16 A (3x208 V 3~/16 A) | 230 V 1~/ 16 A (3x208 V 3~/16 A) | 230 V 3~/16 A | 400 V 3~/16 A | 400 V 3~/35 A | 400 V 3~/35 A |
| Weight | approx. kg | 20 | 27 | 27 | 70 | 120 | 240 | 240 |

Module dimensions

| ServoPress type | | | 405 | 415 / 416 | 417 | 420 | 450 / 460 |
|-------------------------|-----------|----------|------|-------------|---------|----------|-----------|
| Housing | | | | | | | |
| | A | mm | 590 | 560 | 762 | 978 | 1166 |
| | B | mm | 309 | 330 | 412 | 535 | 677 |
| | C | mm | 440 | 434 | 600 | 763 | 992 |
| | D | mm | 109 | 109 | 134 | 180 | 236 |
| Cable connection | | | | | | | |
| | E | mm | ~ 75 | ~ 75 | ~ 90 | ~ 100 | ~ 90 |
| | F | mm | ~ 60 | ~ 60 | ~ 60 | ~ 60 | ~ 60 |
| Flange | | | | | | | |
| | G | mm | 47 | 77 | 92 | 122 | 120 |
| | H | mm | 75 | 75 | 130 | 140 | 150 |
| | J | mm ±0.1 | 60 | 88 | 120 | 160 | 210 |
| | K | mm ±0.1 | 60 | 63 | 115 | 120 | 130 |
| | L | mm ±0.1 | 40 | 59.4 x 59.4 | 75 | | |
| | M | Ø mm | 45h7 | 45h7 | 65h7 | 90h7 | 100h7 |
| | N | mm | 11 | 11 | 19 | 32 | 33 |
| | O | mm | 4 | 4 | 4 | 5 | 5 |
| | AA | Ø mm | 5.3 | 6.3 | 8.4 | 10.1/M12 | 12.0/M14 |
| | BB | Ø mm | M5 | M6 | M8 | | |
| Ram | | | | | | | |
| External ram dimensions | P | mm | Ø 14 | 32 x 32 | 42 x 42 | 55 x 55 | 65 x 65 |
| Ram bore (with bushing) | Q | Ø mm | 6H7 | 10H7 | 20H7 | 20H7 | 20H7 |
| | R | mm | 18 | 30 | 50 | 40 | 50 |
| | S | | M5 | M8 | M10 | M10 | M10 |
| | T | mm | 8 | 10 | 20 | 20 | 20 |
| Top working position | U | mm | 40 | 50 | 60 | 60 | 60 |
| Top ram position | V | mm | 30 | 37.5 | 35 | 50 | 45 |
| For pin bore | W | mm ±0.02 | | 22 | 32 | 40 | 40 |
| for thread | X | mm | | 22 | 32 | 40 | 40 |
| | Y | | | M5 | M6 | M8 | M8 |
| | Z | Ø mm | | 5H7 | 5H7 | 8H7 | 8H7 |

Standard operating profile

