

SCHMIDT® Slide tables

For efficient production

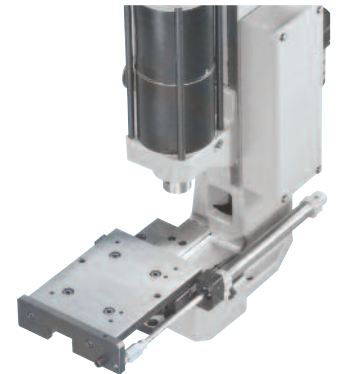
SCHMIDT® Slide tables are specially designed for the high forces of press systems and where a position requires high precision against an adjustable stop. It is an economic solution for tall parts and for placement of parts outside of the danger area. They can be mounted, depending on the type, both in longitudinal and lateral positions, and can be adapted for automated processes.

Features:

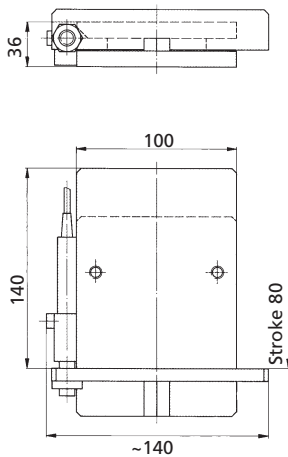
- Cross roller bearings for high-precision guidance
- Play-free adjustment of the table guidance is possible
- Maintains its working position via pneumatic cylinders
- Position detection of the slide table via integrated sensors
- Integrated shock absorbers cushion impact at end positions
- Positioning via pneumatic cylinders in automatic mode
- The press stroke is activated only when the slide is in its proper position.



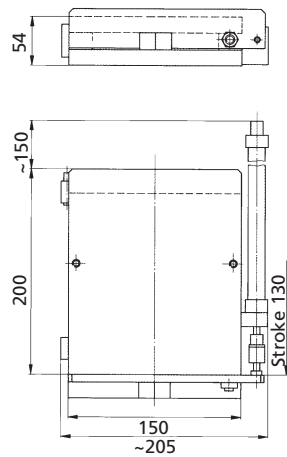
SCHMIDT® ST 45 P
Longitudinal slide table



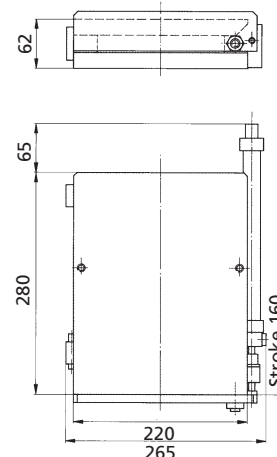
ST 10 / ST 10 P
(stroke 80 mm)



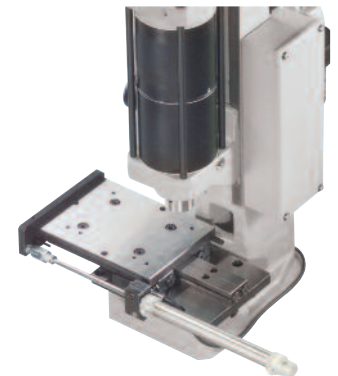
ST 45 P
(stroke 130 mm)



ST 140 P
(stroke 160 mm)



SCHMIDT® ST 45 P
Lateral slide table
with adapter plate for fastening
on the fixture mounting platen



SCHMIDT® ST45 Slide table
with bow-type handle, manual



Type	ST 10	ST 10P	ST 45	ST 45P	ST 140P
Pressure load	kN 10	10	45	45	140
Stroke	mm 80, 160	80, 160	130, 200, 250	130, 200, 250	160, 200, 250, 300
suitable for press type	20, 23, 24	20, 23, 24	20, 23, 24, 25, 27, 32, 33, 34, 61, 62, 65, 323, 327, 361	20, 23, 24, 25, 27, 32, 33, 34, 61, 62, 65, 323, 327, 361	29, 36, 65, 68, 74, 76, 329, 362, 365, 368, 374, 376
Manual presses	up to 10 kN	up to 10 kN	all	all	all
ServoPresses	405, 415, 416	405, 415, 416	420 max.	420 max.	all
Shock absorber	●	●	●	●	●
Bow-type handle	●	●	●	●	●
Operating mode	manual	pneumatic	manual	pneumatic	pneumatic

Mounting holes available upon request
● = Standard

Special designs for very long strokes on request
manual = without cylinder, without sensors, without shock absorber